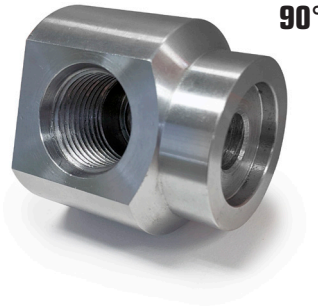
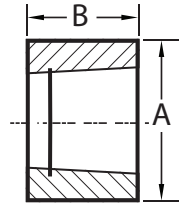
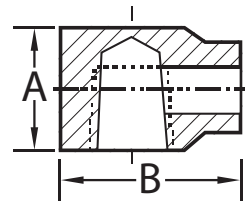


R.B. Packings & Seals

WELD-ON PORTS



90°



MATERIAL : AISI-1020 STEEL

Weld-on ports for hydraulic cylinders are components that facilitate the connection of hydraulic lines to the cylinder. These ports are welded directly onto the cylinder's body and are used to channel hydraulic fluid into and out of the cylinder, enabling its operation.

Ref.Number	Port Size	A	B
NPT			
HCNPT-1/4	1/4-18 NPT	0.870	0.500
HCNPT-3/8	3/8-18 NPT	1.000	0.500
HCNPT-1/2	1/2-14 NPT	1.250	0.680
HCNPT-3/4	3/4-14 NPT	1.500	0.810
HCNPT-1	1-11.5 NPT	1.750	1.180
SAE			
HCSAE-04	SAE 4	0.750	0.560
HCSAE-05	SAE 5	0.870	0.620
HCSAE-06	SAE 6	0.870	0.680
HCSAE-08	SAE 8	1.120	0.680
HCSAE-10	SAE 10	1.250	0.870
HCSAE-12	SAE 12	1.500	1.000
HCSAE-16	SAE 16	1.750	1.250

Ref.Number	Port Size	A	B
90° Degree NPT			
HCNPT-1/4/90	1/4-18 NPT	1.250	1.250
HCNPT-3/8/90	3/8-18 NPT	1.250	1.560
HCNPT-1/2/90	1/2-14 NPT	1.620	1.750
HCNPT-3/4/90	3/4-14 NPT	2.000	1.930
90° Degree SAE			
HCSAE-04/90	SAE 4	1.120	1.120
HCSAE-06/90	SAE 6	1.250	1.250
HCSAE-08/90	SAE 8	1.620	1.620
HCSAE-10/90	SAE 10	1.750	1.875
HCSAE-12/90	SAE 12	2.125	2.000

3260 Guénette Street • Montréal • Québec • H4S 2G5 • 514-334-2220
180-900 Pierre-Bertrand Blvd • Québec • Québec • G1M 3K2 • 418-688-3202

www.sealsonline.com